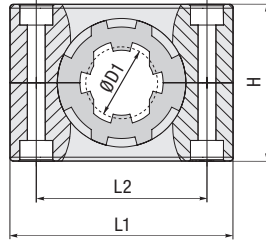


Noise Reduction Clamp
Type NRC


A

Group	STAUFF	DIN	Outside Diameter		Ordering Codes (* = Material)			Dimensions							
			Pipe / Tube	Ø D1	Clamp Assembly	Clamp Body	NRC Insert	L1	L2	H	Width				
			(mm)	(in)	(Clamp Body + NRC Insert)	(2 Clamp Halves)	(2 Insert Halves)								
2	2	2	6		206-*NRC	2-*RI-S/NRC	RI-NRC-6-2-*	42	26	32	30	1.65	1.02	1.26	1.18
			8	5/16	208-*NRC		RI-NRC-8-2-*								
			10		210-*NRC		RI-NRC-10-2-*								
			12		212-*NRC		RI-NRC-12-2-*								
			12,7	1/2	212.7-*NRC		RI-NRC-12.7-2-*								
3	3	3	14		314-*NRC	3-*RI-S/NRC	RI-NRC-14-3-*	50	33	35,5	30	1.97	1.30	1.40	1.18
			15		315-*NRC		RI-NRC-15-3-*								
			16	5/8	316-*NRC		RI-NRC-16-3-*								
4	4	4	18		418-*NRC	4-*RI-S/NRC	RI-NRC-18-4-*	59	40	41,5	30	2.32	1.57	1.63	1.18
			20		420-*NRC		RI-NRC-20-4-*								
5	5	5	21,3		521.3-*NRC	5-*RI-S/NRC	RI-NRC-21.3-5-*	71	52	56,5	30	2.80	2.05	2.22	1.18
			22	7/8	522-*NRC		RI-NRC-22-5-*								
			25		525-*NRC		RI-NRC-25-5-*								
			26,9		526.9-*NRC		RI-NRC-26.9-5-*								
			28		528-*NRC		RI-NRC-28-5-*								
			30		530-*NRC		RI-NRC-30-5-*								
			32	1-1/4	532-*NRC		RI-NRC-32-5-*								
6	6	6	33,7		633.7-*NRC	6-*RI-S/NRC	RI-NRC-33.7-6-*	86	66	64,5	30	3.39	2.60	2.54	1.18
			35		635-*NRC		RI-NRC-35-6-*								
			38	1-1/2	638-*NRC		RI-NRC-38-6-*								
			40		640-*NRC		RI-NRC-40-6-*								
			42		642-*NRC		RI-NRC-42-6-*								
7M	7M	7M	45,5		745.5M-*NRC	7M-*RI-S/NRC	RI-NRC-45.5-7M-*	123	100	100	40	4.84	3.94	3.94	1.57
			48		748M-*NRC		RI-NRC-48-7M-*								
			51		751M-*NRC		RI-NRC-51-7M-*								
			53,4		753.4M-*NRC		RI-NRC-53.4-7M-*								
			57		757M-*NRC		RI-NRC-57-7M-*								
			60		760M-*NRC		RI-NRC-60-7M-*								
			63,5		763.5M-*NRC		RI-NRC-63.5-7M-*								
			65		765M-*NRC		RI-NRC-65-7M-*								
8M	8M	8M	70		870M-*NRC	8M-*RI-S/NRC	RI-NRC-70-8M-*	165	140	135	45	6.50	5.51	5.31	1.77
			72		872M-*NRC		RI-NRC-72-8M-*								
			76		876M-*NRC		RI-NRC-76-8M-*								
			80		880M-*NRC		RI-NRC-80-8M-*								
			88,9		888.9M-*NRC		RI-NRC-88.9-8M-*								

Ordering Codes

 Clamp Assembly ***2*12-*PP-NRC**

One assembly is consisting of one clamp body and one insert.

- * STAUFF Group **2**
- * Exact outside diameter Ø D1 (mm) **12**
- * Material code (see below) **PP**
- * Insert **NRC**

 NRC Clamp Body ***2-*PP-*RI-S/NRC**

One NRC clamp body is consisting of two clamp halves.

- * STAUFF Group **2**
- * Material code (see below) **PP**
- * Clamp Design **RI-S/NRC**

NRC Elastomer Insert

***RI-NRC-*12-*2-*SA73**

One NRC elastomer insert is consisting of two insert halves.

- * NRC Elastomer Insert **RI-NRC**
- * Exact outside diameter ØD1 (mm) **12**
- * STAUFF Group **2**
- * Material code **SA73**

Standard Materials

Polypropylene
 Colour: Black
 Material code: **PP**
Elastomer Insert
Thermoplastic Elastomer (73 Shore-A)
 Colour: Black
 Material code: **SA73**

See pages 178 / 179 for material properties and technical information.

 Alternative materials are available upon request.
 Please contact STAUFF for further information.

Special Materials

Please contact STAUFF for further details on fire-proof clamp body materials, tested and approved according to several international fire-protection standards (such as BS 6853, EN 45545-2, UL 94 and many more).

See pages 180 / 181 for material properties and technical information.

Additional outside diameters are available upon request. Please contact STAUFF for further information.

Product Features

- Designed for the noise and vibration reducing installation of pipes and tubes
- Suitable for the most common outside diameters from 6 to 42 mm and from ¼ to 1 ½ inch respectively
- Working principle based on a specially shaped, two-part elastomer insert, which mechanically absorbs vibration in the pipe or tube and as a result reduces noises arising to a minimum
- Elastomer insert is in particular distinguished by how little of its surface is in contact with the pipe or tube as well as with the clamp body
- Light tension of the elastomer insert in mounted condition provides the necessary clamping force
- Tongue-groove contour of the elastomer insert and the clamp body (which is reversed and thus diverges from standard DIN 3015 clamps with elastomer insert) enables the system to be used for the maximum range of outside diameters per clamp size, which contributes to flexibility, versatility and optimisation of the required installation space